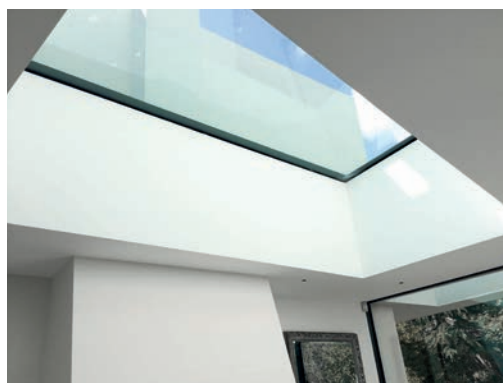
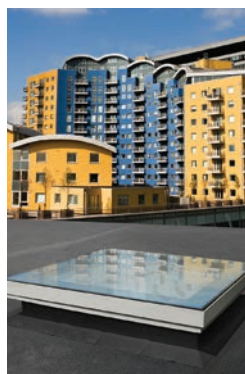


Shop Smarter with Our Stock Sizes and Prices!  
Buy online: [www.rooflights-skylights.co.uk](http://www.rooflights-skylights.co.uk)



# Choose **GLASS** Rooflights · Skylights Multi-Part · AOVs



[www.nationaldomes.com](http://www.nationaldomes.com)  
Made to Measure, Prices to Suit!



# Is a **GLASS** rooflight right for you?

*Quick Tip! If the rooflight can be clearly seen from the outside of the property or if you are looking to use it as a centrepiece inside an extension, then a glass rooflight is the best solution.*

Rooflights in these positions act as design features and a glass rooflight can provide a sharp, stylish and solid finish with options in glazing, frame colours and much more. Glass rooflights are one of the most effective ways to get natural light into a property. Available in a vast range of stock sizes along with bespoke options, you simply need to decide how much sky you would like to see while remaining inside. Fitting a suitably sized rooflight will flood the interior space with daylight.

## Versatility

Rooflights & Skylights range offers an array of functionalities to suit any project requirements: fixed units; ventilated units; access hatches, smoke vents and units that you can walk on.

## The clearest views

For the best possible view of the great outdoors, Rooflights & Skylights glazing is clear as standard. Alternative, task-specific finishes are also available:

- **Diffused glazing** – increases the uniformity and dispersion of light as well as offering privacy where required.
- **Solar Control Glass** allows light to enter while reflecting and absorbing the heat.
- **Low Emissivity Glass** (Low E glass) reduces heat loss by reflecting heat back into a room.
- **Ritec Easy Clean** coating available upon request.

## Double-glazed as standard

All Rooflights & Skylights-supplied units are double-glazed as standard for improved heat insulation and energy conservation, with the option on some units to increase the specification to triple or quadruple glazed.

## Minimise heat loss, prevent condensation

While it may sound negative, Rooflights & Skylights units are available thermally broken... which is a good thing! A thermal break is a layer of insulation that sits between the inner and outer halves of the rooflight's frame. This reduces the transmission of heat and cold and prevents condensation.

## An energy-efficient performer

Rooflights & Skylights glass rooflights offer exceptional thermal performance, which is indicated by the U-Value. Measured in  $W/m^2K$ , the lower the U-Value, the lower the thermal transmittance and the better insulated the product is.

Rooflights & Skylights offers U-Values as low as  $0.5W/m^2K$ , which helps keep warmth in during winter and heat out during summer. Each brand offers glazing options that are designed to be cost and energy efficient, with triple and quadruple glazed units able to achieve particularly low U-Values.

Please ensure the rooflights you specify achieve Part L Building Regulations compliance for the relevant building application.



## Now add fresh Air

Not only do glass rooflights deliver additional natural light, but they can improve fresh air flow, too. Ventilation provides year-round health and wellbeing benefits. Rooflights & Skylights range offers rotary and hinged ventilation options, which can be controlled manually or electrically. Should your rooflight need to provide access to a flat roof, an access hatch can be fitted.

## Safe and secure

Secured by design and part Q compliant options available on selected fixed units for added security and peace of mind.

## Quick delivery

Most standard size stock units, with or without upstands, can be delivered direct to site within 48 hrs. The Rooflights & Skylights team will advise on lead times for bespoke and made-to-measure units.

To discuss your project, call: 01276 450626 or place your order [ONLINE](#) **FREE NATIONWIDE DELIVERY**







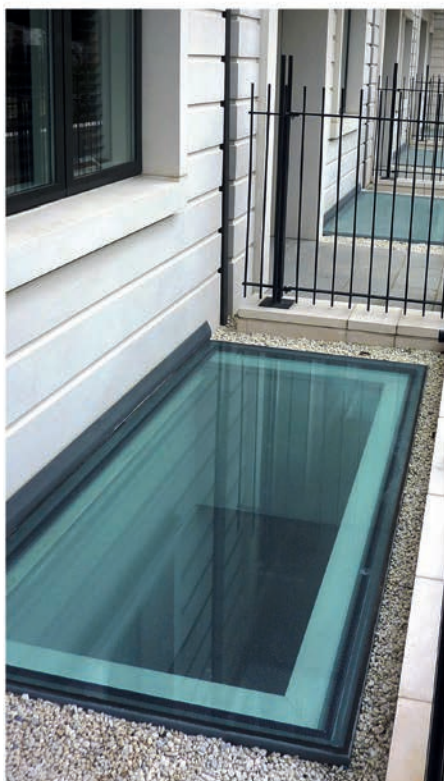
# Standard & Bespoke

Astroglaze units feature sealed double-glazing that is housed within a thermally broken aluminium frame to deliver high insulation values. Yet, with increased glass specification, Astroglaze can achieve incredible U-Values as low as  $0.5\text{W/m}^2\text{K}$ . This superior thermal performance keeps warmth within the home and can have the added bonus of reducing heating bills.

With a stylish, low-profile design and no internally visible framework on fixed units, Astroglaze looks good in any setting and achieves maximum daylight inside a property.

Astroglaze offers a range of walk-on units to fit over builder's timber kerbs and have been designed with strength in mind. It's therefore the perfect rooflight for roof terraces as well as internal walk-on applications, allowing natural light into cellars and basements.

Astroglaze can be made to order in custom sizes. It can be supplied as a single unit or as a larger multi-part system.



Find out how an Astroglaze walk-on rooflight transformed an outside space – page 18.



To discuss your project, call: 01276 450626 or place your order [ONLINE](#) FREE NATIONWIDE DELIVERY





## Astroglaze at a Glance

- Low profile stylish design with superior thermal performance
- No internally visible framework for maximum daylight
- U-Values from as low as 0.5W/m<sup>2</sup>K with increased glass specification
- Thermally broken aluminium unit for improved thermal performance
- Complete weather, air permeability and non-fragility testing compliance
- Slip-resistant external finish for walk-ons available
- **Shape:** Square, Rectangular, Circular, Bespoke and other shapes available
- Designed to fit a builder's kerb
- 24V Electric opening options – including accessories
- **Ventilation:** Manual or Electric Hinged
- Smoke Vents, AOVs and Access Hatches available
- Sliding Flat Glass Units also available
- **Warranty:** 15 years on frame and edge seals
- Manufactured in the UK

[Click here](#) to visit our Astroglaze range



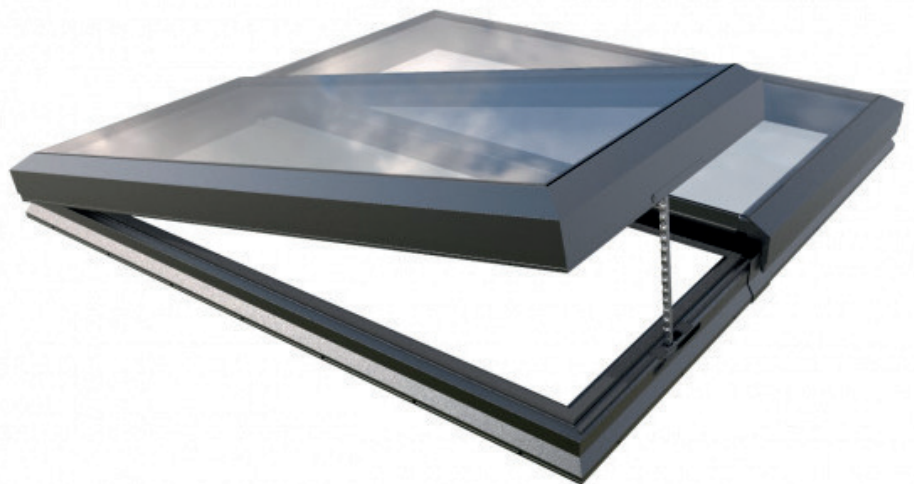
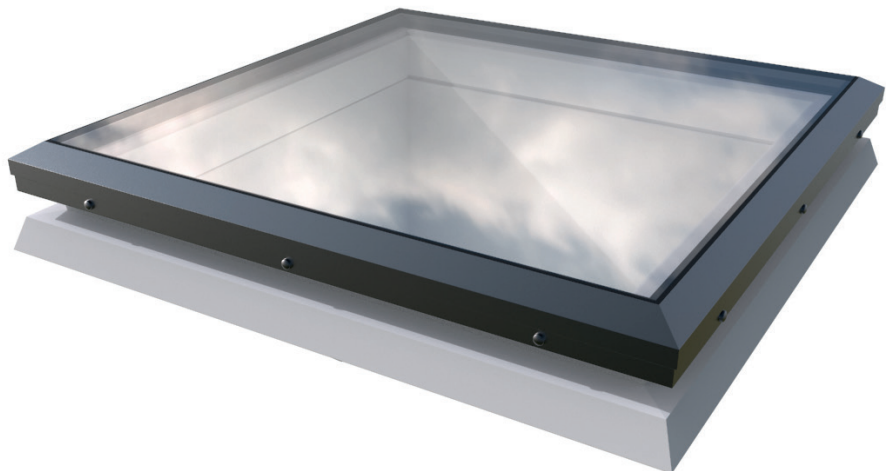


# Flat Glass

This contemporary fixed glass rooflight is beautifully designed and provides a sleek and cost-effective solution for installing to an existing builder's kerb. It is also available with a splayed PVC kerb for direct fitting to the roof deck and is suitable for mounting at pitches of 2° – 15°.

The double-glazed laminated glass unit delivers U-Values as low as 1.1W/m<sup>2</sup>K ensuring good insulation and low thermal transmittance.

Brett Martin fixed glass units are also highly secure with Secured by Design accreditation on fixed units and P4A class resistance to burglary and vandalism for added peace of mind.



To discuss your project, call: 01276 450626 or place your order [ONLINE](#) **FREE NATIONWIDE DELIVERY**



## Brett Martin at a Glance

- Fully sealed laminated, double-glazed unit
- Suitable for mounting at pitches of 2 – 15°
- **Shape:** Square, Rectangular and Circular
- U-Values as low as 1.1W/m<sup>2</sup>K
- 'Secured by Design' accreditation on all fixed units as standard
- Glass specification is non-fragile to CWCT TN67 Class 1 for overhead glass (standard sizes)
- Self-clean and solar control glass options available
- 10 standard stock sizes in multiple configurations, delivered to site within 48-72 hours
- Bespoke options available up to 3600mm x 1650mm
- Top-only units plus 150mm and 300mm kerb options
- **Ventilation:** Trickle, Manual or Electric Hinged
- **Warranty:** 10 Years
- Manufactured in the UK

[Click here to visit our Brett Martin range](#)





# LumiGlaze

COXDOME has stood the test of time – known within the trade as the ‘original’ rooflight, it provides a high-performance, innovative and stylish solution that remains sought-after today.

It’s flat glass unit design with slim aluminium frame profile is highly effective at bringing natural daylight into a property while delivering clear panoramic views.

For those needing to upgrade an old rooflight unit, COXDOME is often the preferred solution as it can be easily and cost-effectively fitted with minimal hassle. All units are available with either a splayed or vertical upstand that is ready to fit directly to the roof deck.

It offers U-Values as low as 1.0W/m<sup>2</sup>K while also delivering exceptional noise reduction.

Manual mechanisms support ventilation requirements, with electric operation options available for touch-of-a-button convenience. Additionally, Hit & Miss ventilation is offered via a controllable trickle vent.



To discuss your project, call: 01276 450626 or place your order [ONLINE](#) **FREE NATIONWIDE DELIVERY**





## COXDOME at a Glance

- The 'original' rooflight
- **Shape:** Square and Rectangular
- Stock units available within 1–3 working days
- U-Values from as low as 1.0W/m<sup>2</sup>K
- Choice of 150mm PVC splayed or 160mm PVC vertical kerbs
- **Glass:** Toughened outer pane and laminated inner as standard
- Fixings screws concealed with flush cover
- **Ventilation:** Manual or Electric Hinged and Trickle
- **Warranty:** 10 years
- Manufactured in the UK

[Click here to visit our COXDOME range](#)



# Stock Sizes

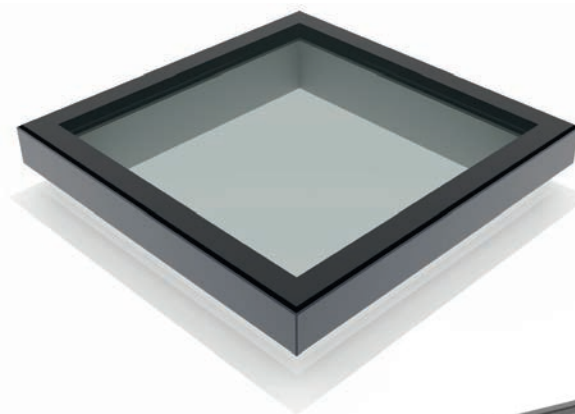
Lunaglaze is a stunning, high-performance modular glass rooflight that is stocked in a range of standard specification sizes, making it cost-effective and available for speedy next-day delivery.

It is supplied either in PVC/Glass or Aluminium/Glass construction, with both options being a fully sealed double-glazed unit that is fitted with toughened and laminated clear glass.

The Aluminium/Glass construction option with a glass edge-to-edge design, has a fully welded, polyester powder-coated frame. This comes in RAL 7016 (Anthracite Grey) as standard but can be ordered in other RAL colours to suit individual projects.

Both Lunaglaze Alu and Lunaglaze PVC are CWCT 1 tested and classified, meaning they can be walked on for occasional cleaning and maintenance purposes. The Top-only unit is designed to be easily installed on a weathered builder's kerb. Alternatively, combined units with either a vertical or splayed kerb can also be supplied.

To support ventilation requirements, Lunaglaze is also available with either manual or electric opening options.



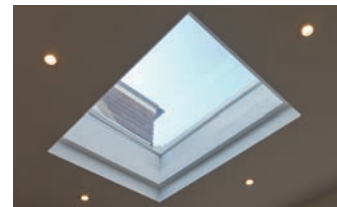




## Lunaglaze at a Glance

- Flat profile double glazed glass rooflights
- **Lunaglaze ALU:** quality, fully welded aluminium framed unit
- 14 stocked sizes available for quick delivery
- Bespoke sizes available up to 3.2 x 1.6m and 2.1 x 2.1m
- **Lunaglaze PVC:** cost effective PVC framed unit with 14 stocked sizes available for quick delivery
- **Shape:** Square, Rectangular and Circular (aluminium) to order
- U-Values from as low as 1.24W/m<sup>2</sup>K
- Thermally broken unit for improved thermal performance
- Clear glass as standard
- Glass specification option is non-fragile to CWCT TN67 Class 1 for overhead glass
- Top-only units to fit a builder's kerb
- PVC vertical and splayed kerbs also available
- **Ventilation:** Trickle, Manual or Electric Hinged
- Smart App control option available
- **Warranty:** 5 Years

[Click here to visit our Lunaglaze range](#)



# Custom-made



Starglaze units come ready to fit directly to the roof deck with either splayed or vertical upstands. Splayed upstands deliver a more even distribution of natural light, while vertical upstands have the benefit of maximising the quantity of light being brought into a property.

U-Values as low as 1.0W/m<sup>2</sup>K ensure good insulation and low thermal transmittance, as well as reducing the risk of condensation, in part achieved by the kerb's cellular construction that prevents against cold bridging.

In addition, a select range of Top-only standard size units are available that are designed for easy installation to a builder's timber kerb.

Starglaze Smoke Vents are also available with fully concealed motors for unobstructed sky views.







## Starglaze at a Glance

- Custom-made, flat glass rooflight
- Thermally broken unit for improved thermal performance
- **Shape:** Square, Rectangular, Circular and Bespoke
- U-Values to suit your requirements
- Choice of PVC vertical and splayed kerbs in various heights
- Clear glass as standard. Other options available on request
- **Ventilation:** Trickle, Manual or Electric Hinged
- Top-only units to fit a builder's kerb
- Smoke Vent/AOVs and Access Hatches available
- **Warranty:** 10 Years
- Manufactured in the UK

[Click here to visit our Starglaze range](#)



# Low Profile



Are style and maximised sky views the priority? Look no further than Thermalight.

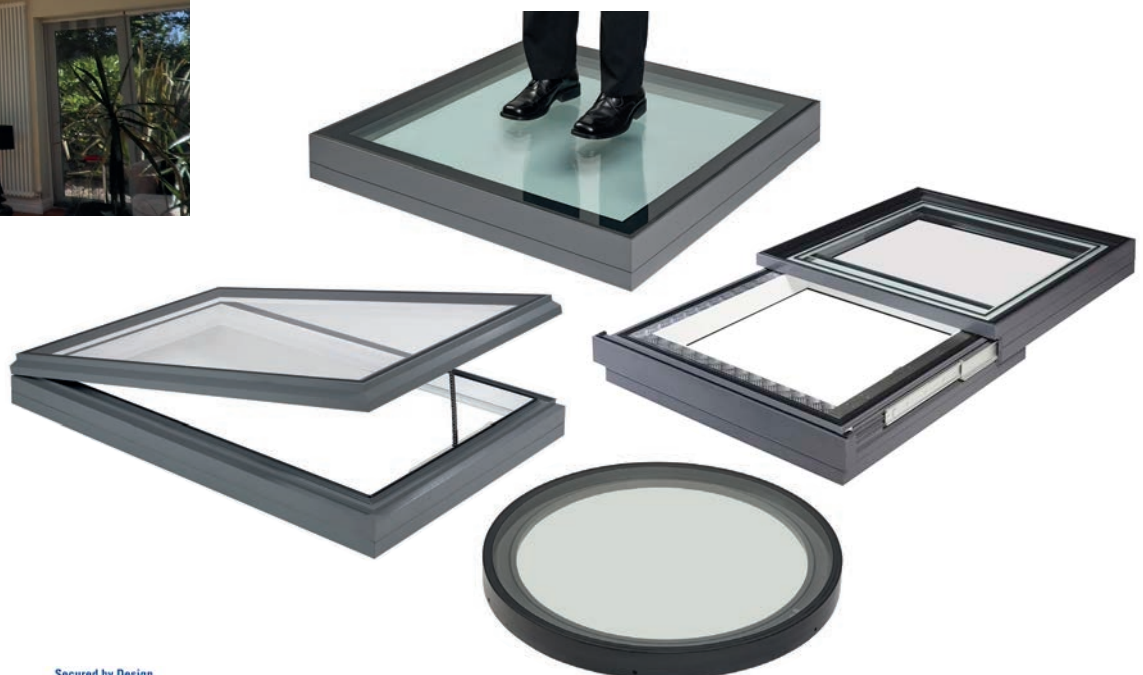
Thermalight is the ideal solution where clean and classy lines, outstanding light transmission and blue-sky views are required.

The fixed unit is designed with no visible framework to maximise daylight, while the low-profile units use triple-sealed, structurally bonded glass for improved heat insulation and energy efficiency. While Thermalight units are double-glazed as standard, triple-glazed units are also available.

Clear glass comes as standard but there are a number of additional glass options, including active solar control, high impact resistance, low maintenance, as well as tinted options in blue, grey or bronze. These tinted finishes help reduce the solar radiation entering a property.

Thermalight rooflights are ideal for flat roof applications. Also available from the Thermalight range are walk-on rooflights ideal for roof terraces.

Thermalight units can be custom-made to suit any rooflight requirements, with Thermalight Pyramid rooflights available in a range of shapes – square, octagonal and elongated – that deliver the ‘wow’ factor in terms of design.







## Thermalight at a Glance

- Minimum framework – maximum daylight
- Low profile fixed unit design with flush framework
- No internally visible framework (up to 5.2m<sup>2</sup>)
- U-Values as low as 0.6W/m<sup>2</sup>K
- Thermally broken unit for improved thermal performance
- Safety glass to both panes
- **Shape:** Square, Rectangular, Circular and Bespoke
- Sliding and 'Secured by Design' options
- Flush glass appearance to outside
- Stock sizes available
- **Ventilation:** Manual or Electric Hinged
- Sliding Flat Glass Units also available
- **Warranty:** 10 years
- Manufactured in the UK
- Fully factory assembled Roof Lanterns and Pyramids available

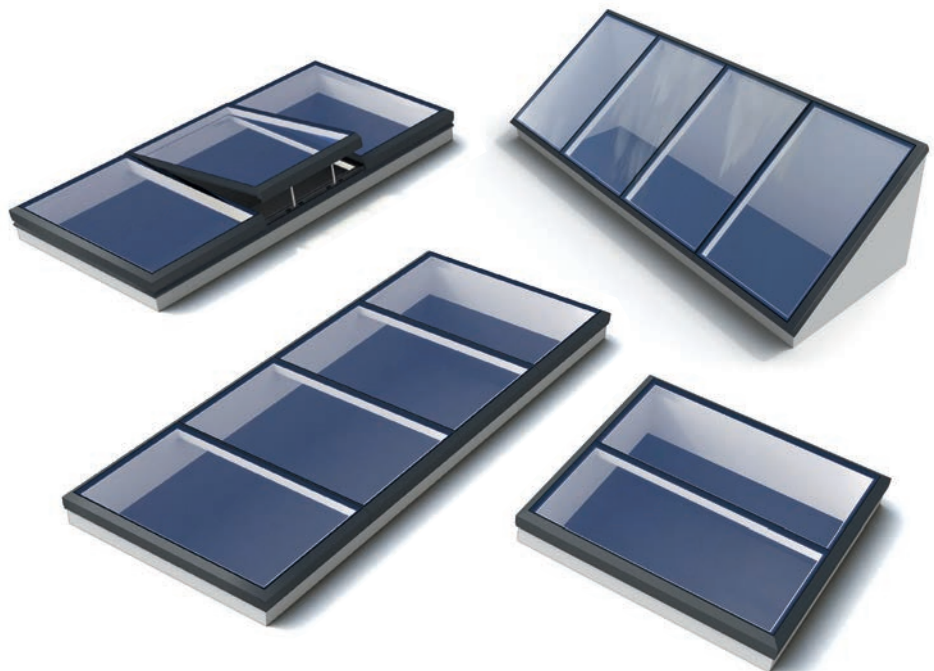
[Click here to visit our Thermalight range](#)



# Large Area Glazing



For rooflight projects requiring a large, glazed area, why not consider a Multi-Part solution. Designed to your specification, the rooflight is supplied as individual units that lock together to give you the desired glazing span. Completely watertight, and easy to install on-site, a Multi-Part solution will flood your home or business with daylight. Numerous ventilation and glass options are also available.



To discuss your project, call: 01276 450626 or place your order [ONLINE](#) FREE NATIONWIDE DELIVERY





Contact our sales team to discuss your requirements today!

# Case Study AstroGlaze

How an Astroglaze walk-on rooflight can transform an outside space.

## The Project

Architect Sara Bondia lived in a first-floor apartment in central London with no outdoor space. Right in front of her kitchen window lay the roof of the ground-floor extension. Keen to spend some time in the open air, Sara decided to convert that roof into a terrace for her family. The terrace would need to be stylish yet functional and suited to their needs.

## The Requirements

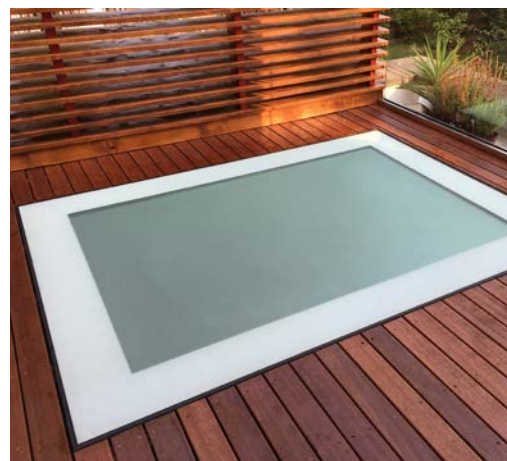
Sara applied for planning permission to renovate the exterior space, incorporating new wooden flooring and a combination of stylish glass and wooden balustrades to preserve neighbours' privacy. She would also replace an existing walk-on rooflight that occupied most of the terrace surface.

Sara sought a supplier that could deliver a tailor-made rooflight that met the project's exacting requirements. A large walk-on solution was needed, measuring 1550mm x 2132mm, which would meet stringent building regulations. Additionally, to maintain a flush surface with the new wooden flooring, a minimum frame height was required. Sara struggled to find suppliers because it was a non-stock item. However, after much online searching, she found Rooflights & Skylights.

## The Solution

Adept at delivering bespoke solutions for a wide variety of residential and commercial projects, Rooflights & Skylights supplied an [Astroglaze walk-on](#) unit for the project in the specified size. To maintain privacy for both Sara and her neighbours below, the glazing was fully sandblasted and delivered with a Ritec easy-clean coating for straight-forward maintenance. The textured finish also ensures suitable grip for those walking on the rooflight surface – essential as the balcony would also be a play area for her young family.

From a design perspective, a white border was chosen around the glazing while the fixings were delivered in a bespoke polyester powder-coated finish of black/grey in RAL 7021. The white border and grey/black fixings set off the colour and texture of the wooden decking well, with a standard black border considered too dark and harsh, creating too much colour contrast to be in-keeping with the overall design scheme of the balcony.



## The Conclusion

The result is a now much-loved and often-used balcony, giving Sara and her family sought-after outside space.

**“** *I'm delighted with the new balcony, before we had no useable external space and had just two small windows in our living and kitchen areas. Now the apartment has large glazed doors and you can walk out into this big open area outside. We use it all the time, for breakfast, lunch and dinner. It's transformed the way we live and has been particularly brilliant during the hot summer evenings.* **”**

Sara Bondia

Regarding Rooflights & Skylights involvement in the project, Sara says: “The Rooflights & Skylights team was extremely supportive. As our requirements were very particular – especially considering the size and weight of the rooflight needed – I had a lot of questions. Due to the large size and the resulting weight, a new steel structure had to be created on top of the roof as it couldn't be supported by existing rafters and joists. I was also struggling to find a solution with the minimum frame size required to make sure that there wouldn't be a step between the rooflight and the decked flooring. All of this had to be taken into consideration and Rooflights & Skylights was well-equipped with the technical information and know-how to answer these questions and responded quickly to all my enquiries. The team was proactive and very supportive, and the quality of the solution is fantastic.”

To discuss your project, call: 01276 450626 or place your order [ONLINE](#) FREE NATIONWIDE DELIVERY





**Actual Product Supplied:**

**Bespoke:** 1 x Astrogaze walk-on unit 1550 x 2132mm, polyester powder coated in RAL 7021 (black/grey).

**Glazing:** Fully sandblasted for a textured finish, with a white border and a Ritec easy-clean coating for ease of maintenance.



# Why choose Rooflights & Skylights?

Because we offer a compelling range of premium daylight solutions at unbeatable prices, and all are eligible for **FREE** nationwide delivery. This is what sets us apart!

As a member of the National Domelight family, a leading supplier of daylight solutions for over 42 years, we bring you an extensive selection of stock-size units designed to flood your space with natural light.

Whether you're in need of a domelight, rooflight, skylight, roof lantern, smoke vent, or access hatch, Rooflights & Skylights is your ultimate go-to webshop. With just a few clicks, you can effortlessly choose any standard size, shape or finish to match your requirements.

Unbeatable prices and exceptional service with Rooflights & Skylights when you shop smart, shop safely and shop online!



- **Buy Online**

If you already know the type, style, and size of unit, just visit our **online shop**: [rooflights-skylights.co.uk](https://www.rooflights-skylights.co.uk)

- **Custom-made**

Check-out the bespoke options on [nationaldomes.com](https://www.nationaldomes.com) then give us a **call on: 01276 450626**

- **Need a little help?**

Our experienced sales team are on hand to help you choose the right solution for your project, and pocket. To speak with a member of our team, **call: 01276 450626**



## Our guarantee of quality

All rooflights and skylights supplied by us have been fully tested and meet all product certification requirements. We guarantee the highest quality, without compromise, at a fair price every time.

## Protecting the environment

We are fully aware of the effect construction activities can have on the environment and are continuously working towards offering new and innovative daylight solutions that minimises any negative environmental impact.

As specialists in natural light solutions, many of our brands are recognised as industry leaders, setting the highest standards for products, quality, and customer service.

To discuss your project, call: **01276 450626** or place your order **ONLINE** **FREE NATIONWIDE DELIVERY**





**Rooflights & Skylights**  
**Unit 205**  
**Basepoint Business Centre**  
**377-399 London Road**  
**Camberley**  
**Surrey**  
**GU15 3HL**

Tel: 01276 450626  
Email: [info@rooflights-skylights.co.uk](mailto:info@rooflights-skylights.co.uk)  
[www.rooflights-skylights.co.uk](http://www.rooflights-skylights.co.uk)



▶ Visit our website to watch our  
product videos.



For stock sizes visit our online shop:  
[www.rooflights-skylights.co.uk](http://www.rooflights-skylights.co.uk)

For bespoke options visit our website:  
[www.nationaldomes.com](http://www.nationaldomes.com)



**Important notes:**  
The responsibility for determining that any building component complies with the  
relevant Building Regulations rests solely with the client or specifier.

Please note lead times and specifications correct at time of print.

The National Domelight Company policy is one of continuous product improvement:  
accordingly we reserve the right to alter specifications without notice at any time.

